

# RICOH AFICIO 240W

Wide Format  
Digital Imaging  
System



**RICOH**<sup>®</sup>

# RICOH

# AFICIO 240W

Delivering  
Big Features to  
Lower-Volume  
Wide Format Users

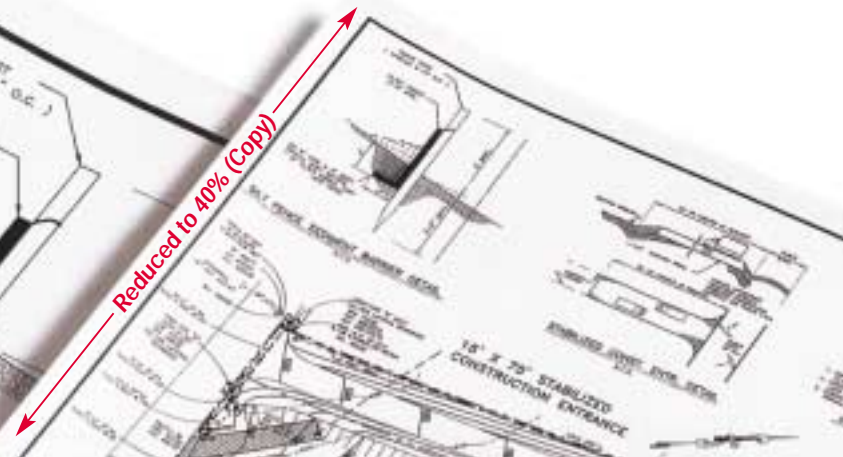
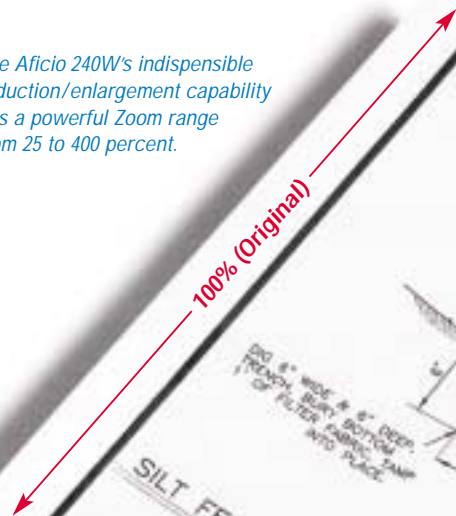
The RICOH® Aficio® 240W System is a compact, "all-in-one" — copy, print and scan — wide format digital imaging system designed specifically for lower-volume users. It sets a new standard for small footprint, affordability, superior image quality and flexibility in a wide format system.

Architects, engineers, commercial and corporate workgroups, and government agencies that don't need large, high volume systems can now achieve unsurpassed productivity and flexibility with the Aficio 240W. It can fit the budget, the space and the performance needs of virtually any size architectural or engineering group.



## The Affordable Solution for Low-Volume Wide Format Copying, Printing and Scanning

The Aficio 240W's indispensable reduction/enlargement capability has a powerful Zoom range from 25 to 400 percent.



## The Aficio 240W Wide Format Digital System Does It All

The Ricoh Aficio 240W wide format digital system offers substantial advantages for wide format users in a variety of office environments, large or small.

- The Aficio 240W is an excellent replacement for an aging analog copier. Less costly to maintain, the Aficio 240W offers more of the performance features most valued by wide format users.
- The system is many times faster, more versatile and more economical than an ink jet plotter, and it adds the value of having both copying and scanning functions.
- The Aficio 240W is cleaner and more versatile than the diazo process.
- The Aficio 240W system is a more economical and much more convenient alternative to outsourcing document reproduction to copy and print shops.
- The Aficio 240W and its RW-240 Controller makes this an excellent workgroup printing system that can either replace or augment centrally located mid- to high-volume systems. By reducing the long walk time to pickup and retrieve documents, it improves workgroup efficiency.
- The Aficio 240W operating panel is easy to read and operate. The panel's LED screen easily guides users through the control of even the most complex commands.

## Aficio 240W Delivers Top Digital Performance That Can Really Make a Difference

### As a Copier:

- The Aficio 240W is easy to use and outperforms many larger wide format copier/printers.
- The Aficio 240W delivers truly superior images. Its 600 dpi resolution produces sharp lines, details and fills. With its 256-grayscale levels, it keeps shading faithful. The Aficio 240W also enables users to fine-tune copies. By selecting the nature of the original — Text/Photo, Photo, Drawing, or Special — the Aficio 240W automatically adjusts image quality for each specific original type.
- The Aficio 240W can be configured in several different ways. The basic Aficio 240W configuration is an optional table that allows manual feeding of cut sheet paper. Or, it can be configured with an optional 500 foot paper roll tray table or a two-roll tray table, either of which can have an optional paper cassette tray added for automatic feeding of cut sheets up to 12" x 18". Changing paper rolls is simple and easy. The roll-changing system features lightweight flange inserts for no-hassle roll changes.
- The Aficio 240W features two output trays. A space-saving upper output tray holds up to 25 sheets vertically at the top of the unit. An additional 20-sheet paper stacker tray drops copies out the back, down to the front and bottom of the unit.



*User-friendly control panel*

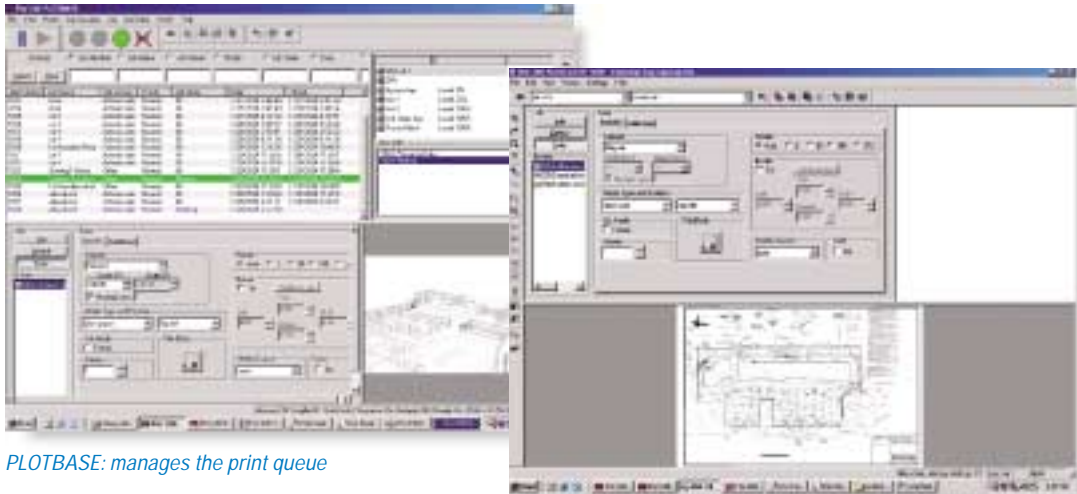


*Easy to change paper at three automatic-feed sources*



## As a Printer:

- Printing directly from a CAD workstation to the Aficio 240W with the RW-240 Controller is fast and document production couldn't be easier. From the CAD workstation, more than two dozen tasks can be requested and managed, including multiple and collated sets, media selection, magnification, image rotation, border setting, account tracking, sample print and stamp printing. Now you can just click from your workstation and create multiple sets of copies quickly and efficiently. No more printing a single set on the pen plotter and then physically carrying the printed output to the copier to make multiple copies.



*PLOTBASE: manages the print queue*

*PLOTCLIENT Win: creates and sends print jobs to PLOTBASE*

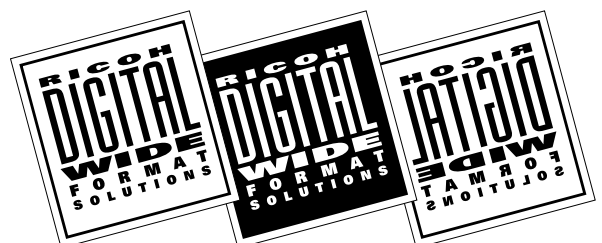
## As a Scanner:

- The Aficio 240W with the RW-240 Controller Scan option maintains drawings and plans in space-saving digital file format on hard drives, so users can burn to a CD or store in virtually any network archiving system. Newly produced documents no longer need to be stored in space-consuming filing drawers and cabinets. Aging legacy documents can be scanned and saved as digital files, reducing the need for filing space and retaining deteriorating paper documents.
- With electronic storage, retrieval time for existing documents is shortened. Documents can be pulled up, examined on the RW-240 controller screen, edited, shared on a network or printed out. It's even possible to edit images, extracting and adding new elements as desired. PDF scans can be attached in emails and sent anywhere in the world via intra/Internet, saving expensive mail or delivery costs.

## Important Digital Advantages Wide Format Users Demand

The outstanding digital capabilities of the Aficio 240W system enable users to benefit from many different types of timesaving, high-productivity features. A complete list is provided in the specifications; a representative few are described below:

- Collated Sets: The Aficio 240W can copy or print complete collated document sets. Sequentially ordered sets can also be rotated and delivered to either output tray in perfect collated order.
- Several Reduction/Enlargement Choices: Reduce and enlarge documents using preset values, specified ratios, auto R/E, directional magnification, and zoom for engineering and architectural applications... in feet and inches OR metric units.
- Stamping: The Aficio 240W offers optional stamping possibilities. Date, page number, and virtually any type of preset stored stamp can be placed in any position and orientation on the page.
- Positive/negative reverse, job preset and features such as overlay, erase, margin adjustment, and double copy make the Aficio 240W even more powerful and versatile.



▲ Positive

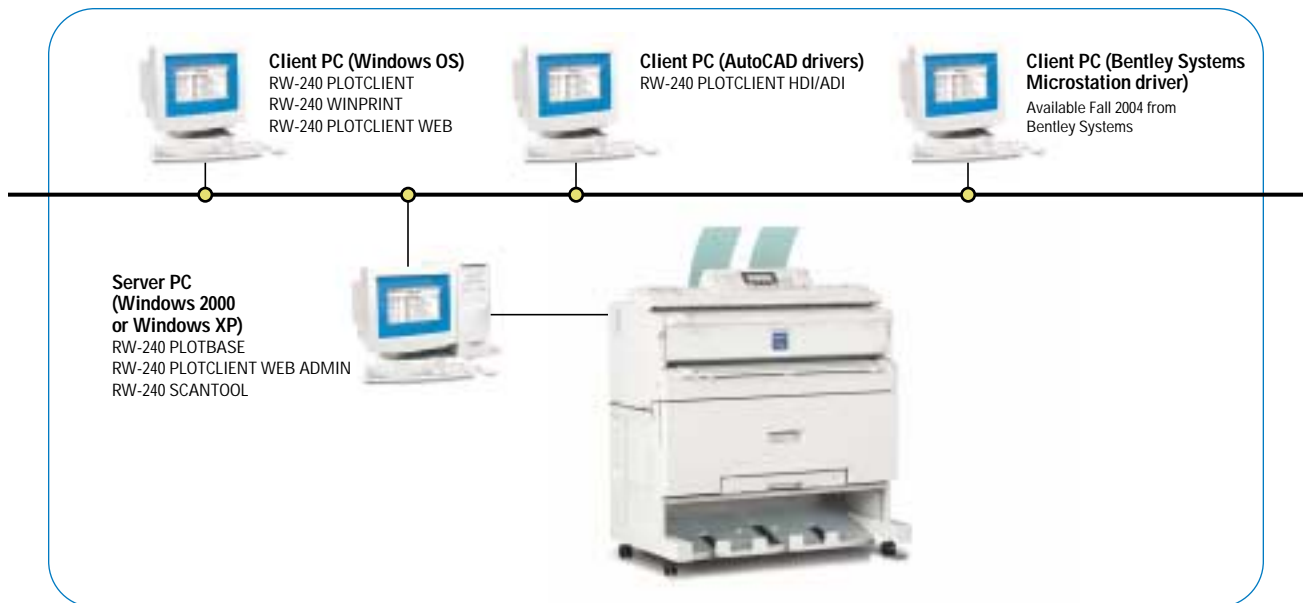
▲ Negative

▲ Mirror Image

# AFICIO 240W

## Robust and Versatile Printing and Scanning With the RW-240 Controller

The RW-240 print controller and its PLOTBASE suite of software are the essential options that transform the Aficio 240W into a versatile, fully-functional network printer to meet virtually every wide format printing need.



The RW-240 controller's PLOTBASE server software acts as the system's print queue manager. It operates on either Windows 2000 Professional SP3 or Windows XP Professional SP1.

The RW-240 controller's PLOTCLIENT software supports a wide variety of applications and operating system functions at each client workstation, including:

- **PLOTCLIENT Win:** for CAD users to create and send print jobs from their workstations.
- **WinPrint:** print drivers for Windows 95/98, NT4.0 2000, ME and XP for printing from any Microsoft Windows application.
- **HDI/ADI:** drivers for printing from AutoCAD 13/14, 2000/2000i, LT2000/LT2000i and 2004/2004LT.
- **PLOTCLIENT Web:** for creating and sending print jobs via the intranet or Internet.

Today's technology-based work environments demand electronic document storage to save precious space and eliminate document retrieval delays and difficulties. The ability to scan originals to storage improves document portability, security and ease of editing.

With the addition of the RW-240 SCANTOOL option, the Aficio 240W can scan original documents for editing, revising, printing and digital storage. Scanning speed is up to 4 pages per minute with a resolution of 200 dpi.

SCANTOOL scans documents to a variety of raster file formats including single and multi-page TIFFs and Adobe PDF files.

*For more information about the amazing Aficio 240W and RW-240 print controller and a complete professional demonstration, call your Ricoh representative today.*

## COPIER

<b>Configuration:</b>	Desktop	<b>Cutting Method:</b>	Synchronized cut, preset cut, variable cut
<b>Paper Source:</b>	Three optional tables (choose one): 1. Manual Bypass Cut Sheet Feed Table 2. One Roll Tray Table With Manual Bypass Tray 3. Two Roll Tray Table With Manual Bypass Tray	<b>Memory Capacity:</b>	80 MB; optional hard drive: 10 GB
<b>Optional Paper Cassette Tray:</b>	The one and two roll tray table options each permit the addition of the Paper Cassette Tray which automatically feeds up to 12" x 18" cut sheet paper.	<b>Original/Copy Size:</b>	Maximum: 36" x 141"; Minimum: 8 1/2" x 5 1/2"; 36" x 78" bypass Copy Exits: Top tray, Standard; Rear/Bottom, with Optional Roll Feed Table
<b>Warm-up Time:</b>	Less than 2 minutes	<b>Original Exits:</b>	Top; Rear Straight Path
<b>First Copy:</b>	22 seconds (D size)	<b>Power Source:</b>	120V/60Hz: 15A
<b>Copying Speed:</b>	4 cpm/ppm (D size); 2 cpm/ppm (E size)	<b>Dimensions (WxDxH):</b>	42.5" x 25" x 23"
<b>Resolution:</b>	600 dpi x 600 dpi	<b>Weight:</b>	218 lbs. (Copier only)
<b>Grayscale:</b>	256 levels	<b>Copier Options:</b>	Cut Sheet Feed Table One Roll Paper Tray Table Two Roll Paper Tray Table Universal Paper Cassette (Only with 1 or 2 Roll Paper Tray Table) Hard Disk Drive (Required for Sorting, Stamping and Image Overlay) Stamp Board Roll Holders
<b>Grayscale Printing:</b>	2 levels		
<b>Reduction/Enlargement:</b>	16 presets: Zoom 25% to 200% in 0.1% increments; 200% to 400% in 0.2% increments		
<b>Multiple Copies:</b>	1-20		

## PRINT CONTROLLER RW-240 (optional)

<b>PC Server Specifications:</b>		<b>PC Interface Slot:</b>	PCI 2.0 or higher x 1 slot (with 3.3V or 5V auto adaptive) Max. Load 5A
<b>Controller Type:</b>	External PC Server (Note: Server not included, must be purchased separately from an appropriate vendor)	<b>Print Controller:</b>	Supported Output File Formats: HP-GL, HP-GL2, HP-RTL, TIFF, Calcomp 906/907, WMF, BMP, CALS, T6X, CIT, PCX.
<b>PC System Requirements:</b>		<b>Optional:</b>	PostScript 3 (for PDF printing and scanning), CGM (Computer Graphics Metafile)
<b>Operating System:</b>	Windows® 2000 Professional SP3 or Windows XP Professional SP1	<b>Unix Support:</b>	Redhat Linux 6.x-7.1; HP-UX 10.x/11.x; Sun Solaris 2.67.x/8.x; SCO Open Server 5.x (up to 5.06)
<b>Processor:</b>	Pentium 4, 1 GHz	<b>Print Controller Features:</b>	Account Tracking      Media Selection Auto Paper Select      Mirror image Border Setting      Multiple copy Entry Collation      Output Tray Select Help      Pen Settings/Stamping Image Rotation      Roll/Media Select Limitless Paper Feed      Status Monitor Locked Print      Sample Print Magnification
<b>PCI:</b>	2.0 or higher x 1 slot (with 3.3 V or 5V auto adaptive)		
<b>System Memory:</b>	At least 512 MB RAM for scanning or drawing to maximum size		
<b>Hard Drive:</b>	At least 10 GB memory		
<b>Network Interface:</b>	10/100 BaseT Ethernet, TCP/IP configuration		
<b>Monitor:</b>	At least 1024 x 768 pixels resolution		
<b>Maximum Speed:</b>	4 ppm (D size), 2 ppm (E size)		
<b>Network Protocol:</b>	TCP/IP, IPX/SPX, lpr/lpq, HTML, SMB		

## SCANNING (optional)

<b>Controller Type:</b>	External PC Server (Same as for Print Controller)	<b>Scanning Modes:</b>	Single Copy, Set copy, Batch Scanning, Archiving, Integrated Editor
<b>Maximum Speed:</b>	4ppm (D size)	<b>Scanner Software:</b>	SCANTOOL
<b>Resolution:</b>	150-600 dpi (1200 dpi with enhancement)	<b>Controller Options:</b>	RW-240 Controller Controller Interface PCB Type 240 Scan Option PostScript 3 (Emulation) CGM (Computer Graphics Metafile)
<b>Scan Size:</b>	8.26" x 7.16" to 35.98" x 236"		
<b>File Formats:</b>	TIFF Single and Multi page (uncompressed/G3/G4), T6X, BMP, RLC, HP-RTL, PCX, CALS 1&2, PDF (Single and Multi-Page).		
<b>Reading Area Setting:</b>	Auto, Fixed, User Defined		
<b>Continuous Input:</b>	Batch Scanning, Scan to File with Autaname, Save Multiple Page Document in One File (PDF or TIFF)		



EPA 2000 Office Equipment Partner of the Year—5th consecutive year  
EPA 2000 Labeling Partner of the Year  
Ricoh Corporation has determined that these products meet the Energy Star® guidelines for energy efficiency.

**Ricoh Consumables:** For maximum performance and yield, we recommend using genuine Ricoh parts and supplies.

Specifications and external appearance are subject to change without notice.

Ricoh is a registered trademark of Ricoh Company, Ltd.  
All other trademarks are the property of their respective owners. © 2004 Ricoh Corporation

Printed in U.S.A. on recycled paper because Ricoh cares.

**Your nearest RICOH-authorized wide format reseller is:**

**Reproduction Equipment Service, Inc.**  
9610 Linkmeadow Lane  
Houston, TX 77025  
phone: (713) 270-0022  
toll free ( 877) 270-2800